



*COMPANY  
PROFILE*

# ***TABLE OF CONTENTS***

- Vision / Mission and Company's Key People
- Quality Compliance
- Safety Statistics
- 2022 and 2023 Schedules
- Workshop infrastructure
- Technical execution team organization
- Recently completed TA/SD details
- Technical Resources
- Statistics of Major TA Handled
- Equipment Wise Experience details
- Details related to Joint Venture or Tie up with OEM
- Special Services
- Appreciation Certificates





# ***VISION & MISSION***

## **Our Vision**

Total Solution Provider for  
Turbo Machinery Rotary  
Equipment's  
Manufacturing of Parts  
and Rotating Equipment  
Maintenance Services

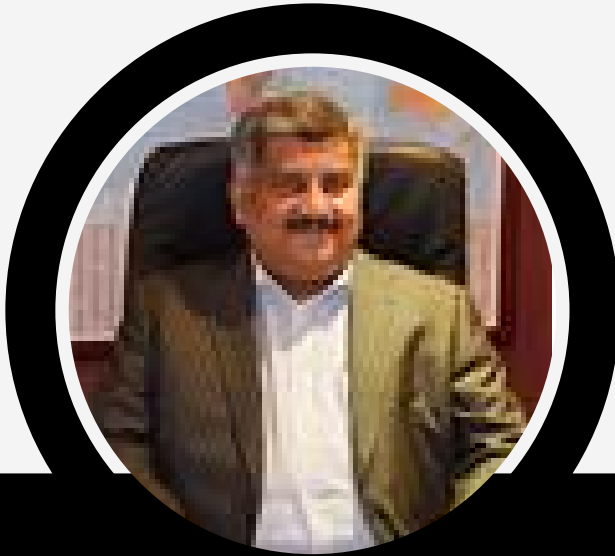
## **Our Mission**

To perform consistently  
and deliver value added  
services to our Clients by  
providing highest quality  
of expertise meeting  
their expectations and  
thus ensuring a Long-  
Term Relationship.

## **Our Values**

- Uncompromising Commitment to Quality, Safety, Health & Environment.
- Emphasizing Excellence in our Work.
- Innovation and Continuous Improvement of our Processes.
- Demonstrate Integrity and Transparency in our Actions.

# **KEY PEOPLE**



**Mohammed Shafeeq  
Mohammed Haneefa**

Managing Director,  
Top Management



**Mohammed Shabeer  
Mohammed Haneefa**

Director General,  
Top Management



**Raghu Raman**

General Manager  
Operation,  
Management



- Complying to International Standards, Codes and Regulatory requirements.

- SMH Manufacturing and Industrial Services Co. Ltd., a leading service provider of Turbo Machinery Rotating Equipment Maintenance, Repairs and Turnarounds, is an ISO9001, ISO14001 and ISO 45001 certified company specialized in Manufacturing of Rotary Equipment's Parts, Rotor Refurbishment, Balancing, Operations and Maintenance serving Industries like Oil & Gas, Petrochemical, Fertilizers, Power and Utility.

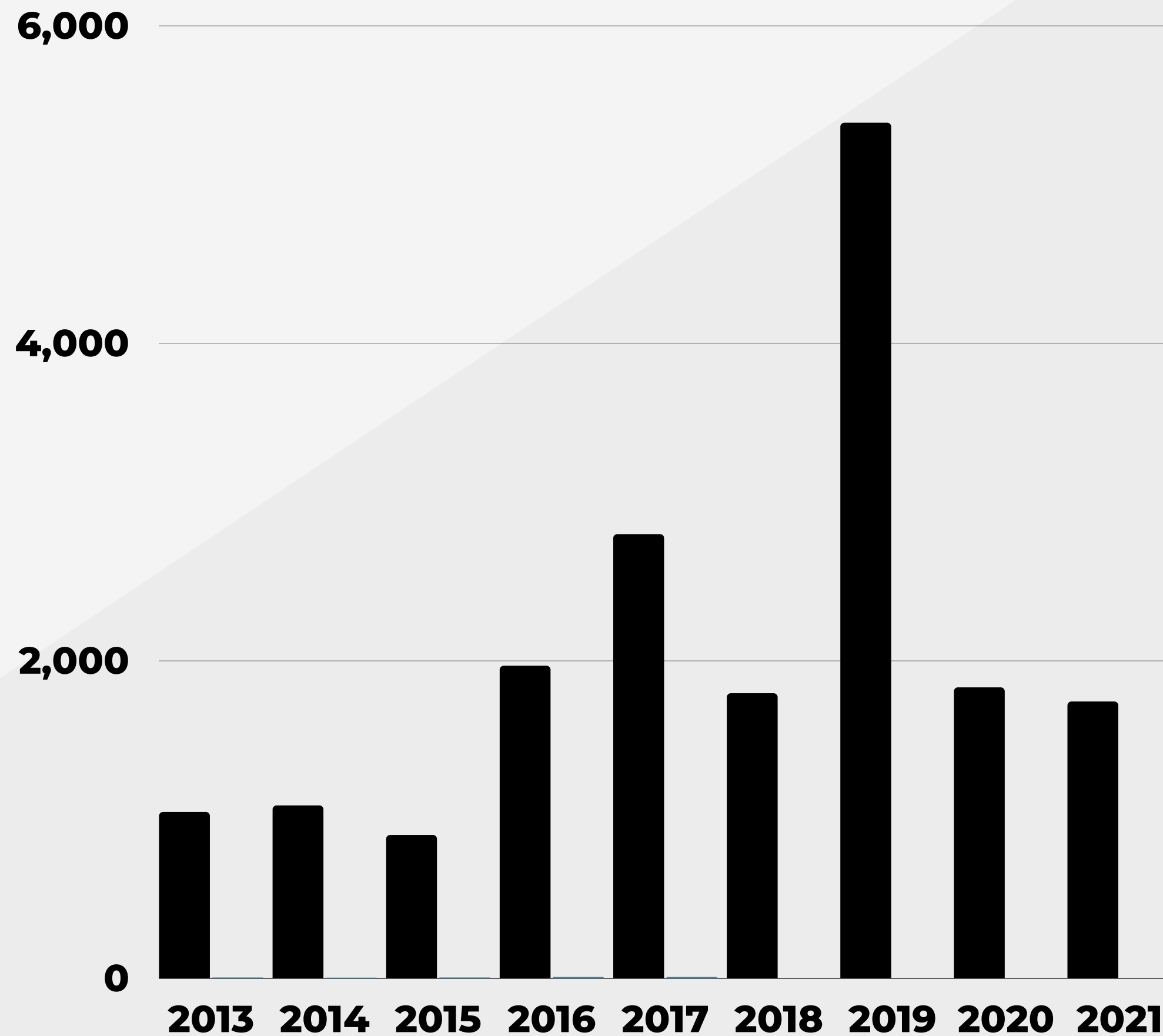
# QUALITY COMPLIANCE





# ***SAFETY STATISTICS***

Completed more than 18  
Million Man-hours without LTI



# ***YEAR 2022 SCHEDULE & ON-GOING PROJECTS***

	YEAR 2022			
PLANTS	Qtr1	Qtr2	Qtr3	Qtr4
SAMAC	JSW Extruder overhauling			
SAMAC	Non-Critical Rotating Equipment			
SAMAC	Motor Coupling and Decoupling			
SIPCHEM-SAHARA	COPERION- Extruder Overhauling			
SAUDI KAYAN	LDPE-Krauss Maffei and Other Rotary Equpt.			
SAUDI KAYAN	PP-JSW Extruders Line 1 & 2, Abex Gear Box (line 1 and 2)			
TASNEE	KOBELCO-Exruder, Main GB and Planetary GB Overhauling			



# YEAR 2022 SCHEDULE & ON-GOING PROJECTS

	YEAR 2022			
PLANTS	Qtr1	Qtr2	Qtr3	Qtr4
TASNEE		PDH-MHI Compressors and Turbine OH		
TASNEE		PDH-Man Turbo Compressors and Turbine OH		
TASNEE		PP-COPERION Extruder Barrel Replacement		
SIPCHEM		Compressor Liner Replacement and Overhauling		
BAYRONI			LSTK of Rotary Equipment in 2 EH and DOP Plants	
S-CHEM				COPERION Extruders Complete Overhauling (3 Extruders)

# ***YEAR 2022 EXPECTED PROJECTS***

YEAR 2022				
PLANTS	Qtr1	Qtr2	Qtr3	Qtr4
IBN ZAHR				FARREL POMINI Extruder O/H
IBN ZAHR				KOBELCO Extruder O/H
SAFCO-2				Turbo Machinery LSTK
SAFCO-4				Turbo Machinery LSTK
KEMYA				KRAUSS MAFFEI Extruder O/H

# ***YEAR 2022 EXPECTED PROJECTS***

YEAR 2023				
PLANTS	Qtr1	Qtr2	Qtr3	Qtr4
AR RAZI	Ar Razi Plant V - Turbo Machinery overhauling			
SAUDI KAYAN	POLY CARBONATE & PHENOLICS Plants Rotating LSTK			
SADARA	Turbo Machinery LSTK			
TASNEE	Mech.Rotating Lumpsum Works BUT-TAM23			
SAMREF				Turbo Machinery LSTK (PACKAGE 1 & 2)
YEAR 2024				
PLANTS	Qtr1	Qtr2	Qtr3	Qtr4
SATORP	Turbo Machinery LSTK (PACKAGE 1,2,3 & 4)			



**SMH MANUFACTURING AND INDUSTRIAL SERVICES COMPANY LTD. RECENTLY BUILD ITS NEWLY EQUIPPED STATE OF THE ART MANUFACTURING AND SERVICES FACILITY LOCATED NEARBY THE INDUSTRIES AT THIRD SUPPORT INDUSTRIAL AREA IN AL-JUBAIL..**

**TOTAL AREA : 15,000 SQ. MTR.**

**ADMIN OFFICE : 1,300 SQ. MTR.**

**HEIGHT OF FACILITY : 12 MTR.**

**EQUIPPED WITH 20 TONS, 10 TONS AND 5 TONS OVERHEAD CRANES**

Maintenance and  
Support Facility  
Area : 900 Sq. Mtr.

## **WORKSHOP INFRASTRUCTURE**

Manufacturing  
Facility  
Area : 1,800 Sq. Mtr.





# ***WORKSHOP INFRASTRUCTURE***





# WORKSHOP INFRASTRUCTURE





# ***WORKSHOP INFRASTRUCTURE***

De-magnetization



Electrical Runout



Bolt Torquing Services



Air Compressor





# ***WORKSHOP INFRASTRUCTURE***

**HORIZONTAL BORING MACHINE**

**HORIZONTAL SHAPER**

**RADIAL ARM DRILL MACHINE**

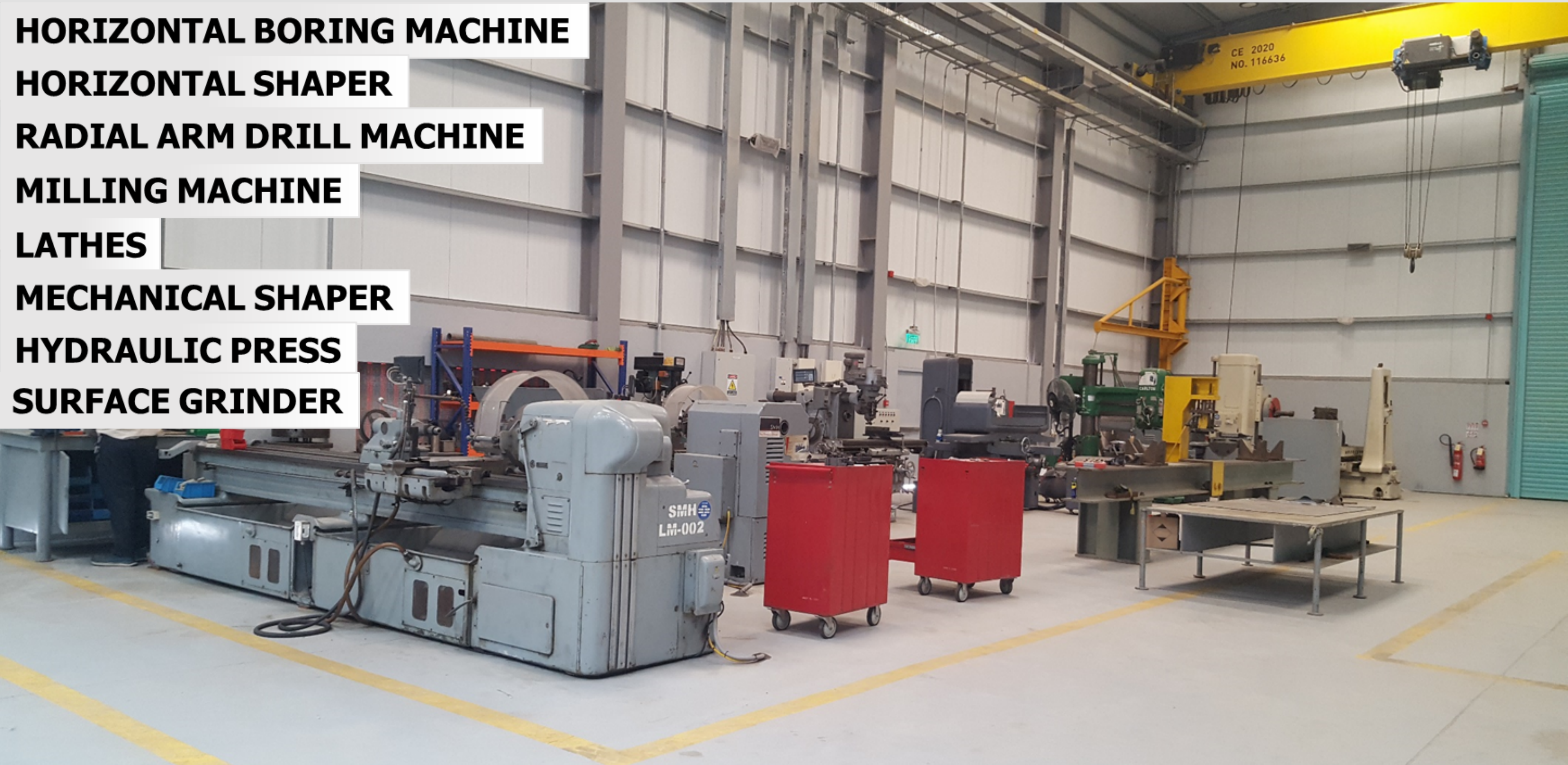
**MILLING MACHINE**

**LATHES**

**MECHANICAL SHAPER**

**HYDRAULIC PRESS**

**SURFACE GRINDER**





# ***WORKSHOP INFRASTRUCTURE***

## ***SCHENK-20 MT LOW SPEED BALANCING MACHINE***



**Rotor weight (Max.)**

**200 Kg (Min) - 20,000 kg (Max)**

**Rotor diameter (Largest)**

**3,000 mm**

**Journal Diameter Range**

**50 mm (Min) - 400 mm (Max)**

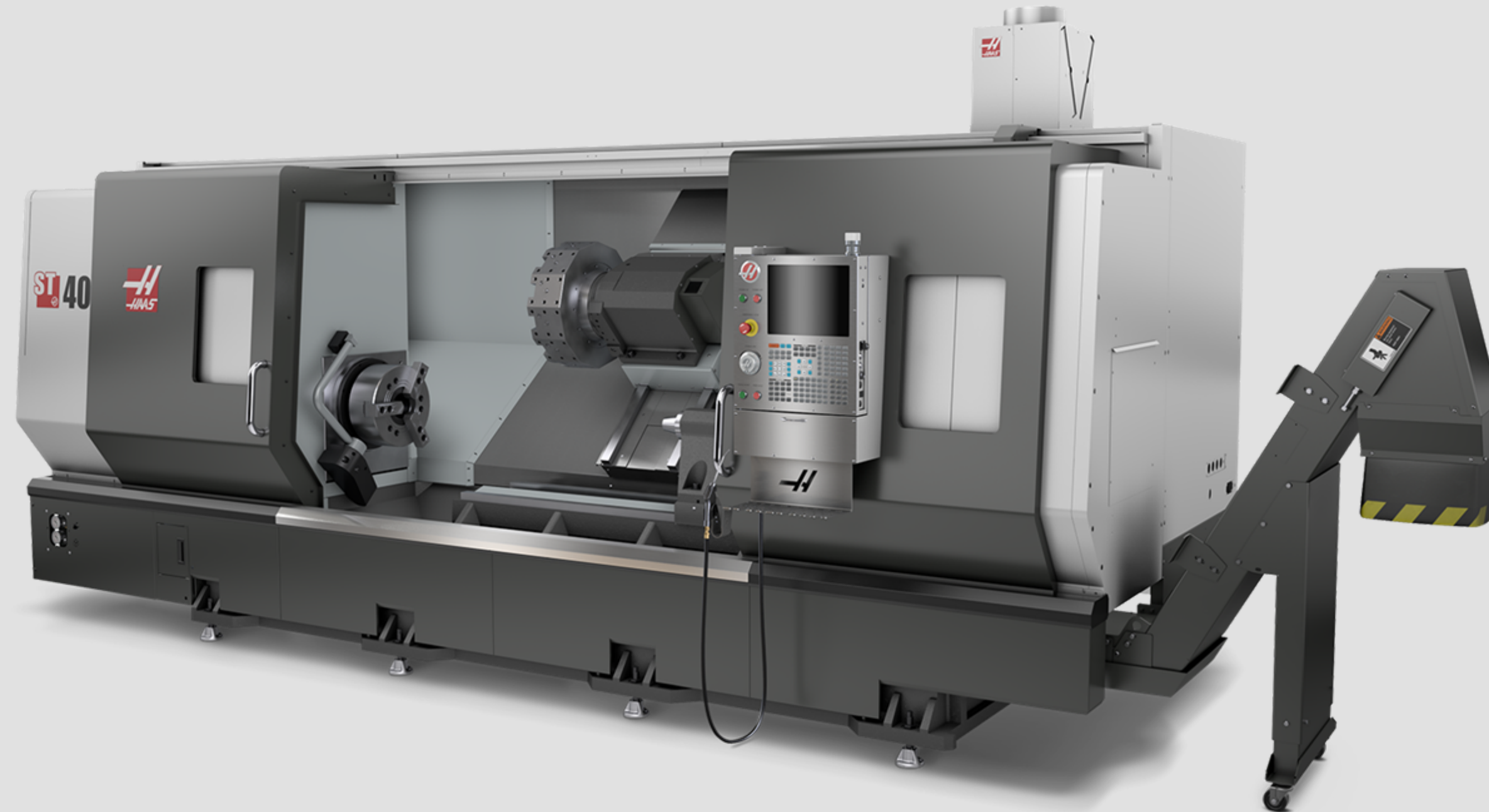
**Rotor length (Max.)**

**200 mm (Min) - 6,000 mm (Max)**



# ***WORKSHOP INFRASTRUCTURE***

## ***CNC LATHE MACHINE***



### **5 AXIS MACHINE**

**X-Axis Travel:1524 mm**

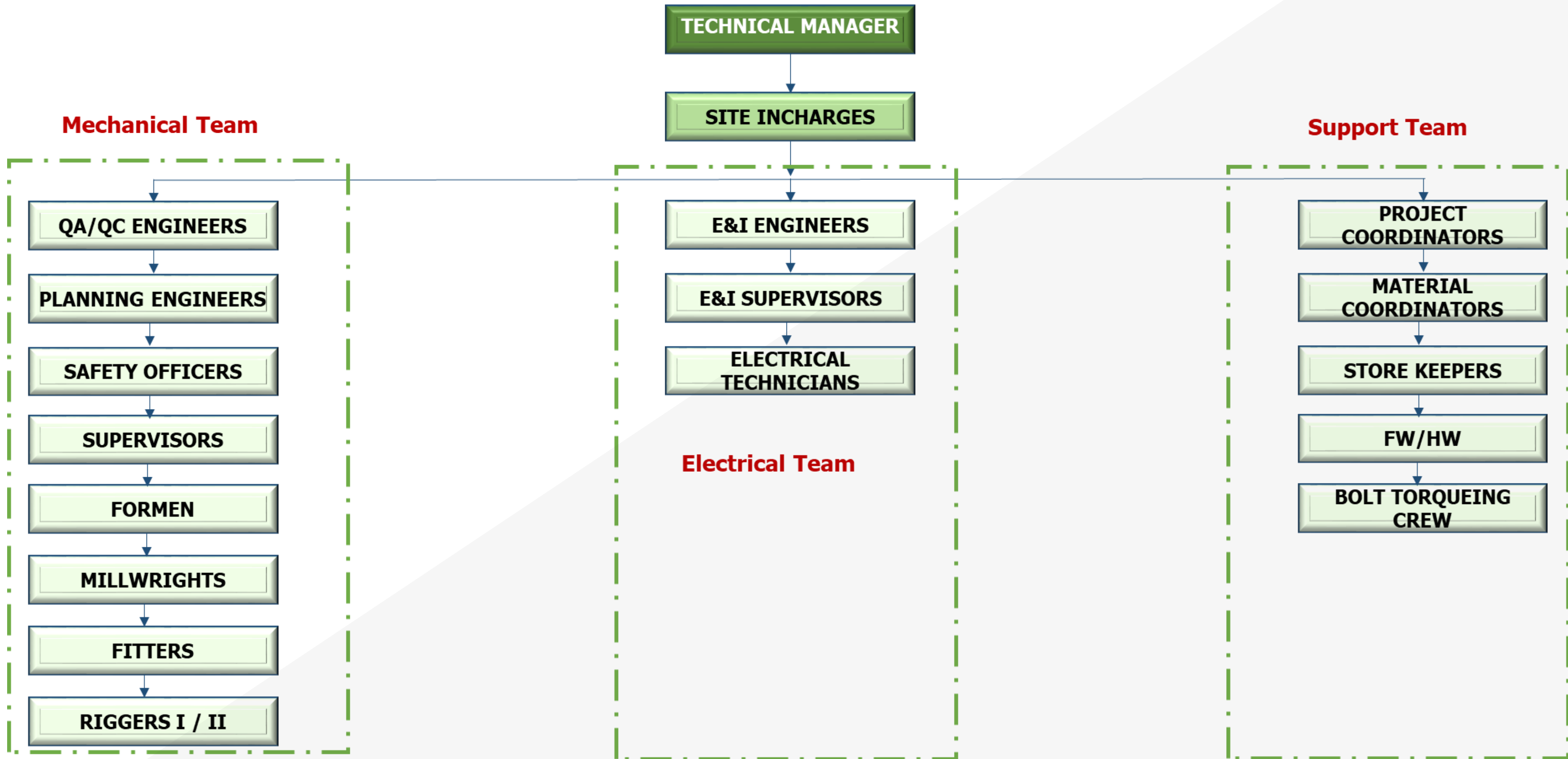
**Y-Axis Travel:508 mm**

**Z-Axis Travel:508 mm**

**Machining of all type of  
Mechanical parts.**

**Material Capabilities: Aluminum,  
Brass, Copper, Precious Metals,  
Stainless Steel,**

# TECHNICAL EXECUTION TEAM ORGANIZATION



## ***RECENTLY COMPLETED TA/SD DETAILS FOR 2020***

<b>Sr. No</b>	<b>Client</b>	<b>Plant</b>	<b>Location</b>	<b>Execution Month</b>
1	<b>SATORP</b>	<b>PACKAGE 2</b>	<b>Site</b>	<b>Jan-20</b>
2	<b>SAUDIKAYAN</b>	<b>POLYCARBONATE</b>	<b>Site/WS</b>	<b>Feb-20</b>
3	<b>SAUDIKAYAN</b>	<b>PHENOLICS, AMINES, U&amp;O</b>	<b>Site</b>	<b>Feb-20</b>
4	<b>IBN ZAHAR</b>	<b>PP1</b>	<b>Site</b>	<b>Feb-20</b>
5	<b>IBN ZAHR</b>	<b>PP2</b>	<b>Site</b>	<b>Feb-Mar 2020</b>
6	<b>AR-RAZI</b>	<b>PLANT-V</b>	<b>Site</b>	<b>Feb-Mar 2020</b>
7	<b>SADARA</b>	<b>PE1</b>	<b>Site</b>	<b>Mar-20</b>
8	<b>SAMAC</b>	<b>PMMA</b>	<b>Site</b>	<b>Apr-20</b>

## RECENTLY COMPLETED TA/SD DETAILS FOR 2021

Sr. No.	Client	Plant	Location	Execution Month	Equipment Description
1	SAMAC	PMMA	Site	Jan 2021	Overhauling of JSW Extruder and Pelletizer Units during SD 2021.
2	ARRAZI	Plant-III	Site	Feb-21	Major Overhauling of Turbines (5 Nos) of Turbines, Minor Overhauling og Turbines (4 Nos), Compressor (4) Fan ((2) and Pumps (2)
3	SHARQ	PE-Extruder	Site	Mar-21	Major Overhauling of Extruders (2 Nos)
4	TASNEE	Acrylic Acid	Site	Mar-21	Major Overhauling MHI Compressor and Turbines
5	SAUDI KAYAN	JSW-Extruder	Site	Mar-21	Overhauling of JSW Extruder and Auxiliaries
6	TASNEE	HDPE/PP	Site	Mar-21	Major Overhauling of Black Line Extruder, Compressor, Planetary Gear Boxes, Pumps, Agitator, Conveyor and Motor Replacement, Rotary Feeder.
7	SAFCO	Plant V	Site	Sept 2021	Testing of Earth Pits for 48 Pits. Including Preventive maintenance and corrective Maintenance
8	IBN ZAHR	PP3 Line 6 Extruder (KOBELCO)	Site	Oct-21	Major OH. Major OH completed for Extruder, Melt Pump, Screen Pack Changer and Pelletizer
9	SCHEM	SCP-JCP	Site	Nov-21	Completed PM of 26 Fin Fans and Overhauling of 16 Fin Fans including Bearing Replacement and Shaft inspection
10	SAUDI KAYAN	HDPE	Site	Nov-21	Major OH of HDPE extruder ( KOBELCO Make – LCM 500) including Extruder, Melt Pump, Pelletizer, Mixer Gear Reducer and Melt Pump Gear Reducer.



# ***TECHNICAL RESOURCES***

- **SMH Direct employees of 336 personnel as per GOSI**
- **Out of total 336 employees, we deployed approximately 200 personnel in S-Chem as long term under Maintenance and Logistics Contract.**
- **We have around 100+ work visit visas stamped for ongoing and upcoming turnarounds.**
- **We have established contract with Rotary Maintenance Companies outside Kingdom to hire skilled technical crew based on scope and volume of the job. When job demand more of skilled technical team, we can mobilize within short notice.**
- **We are capable to mobilize more than 500 skilled technical team. (We have mobilized 1100 personnel in 2019 1<sup>st</sup> Qtr where we executed 4 turnarounds in parallel in Eastern and Western region).**



# STATISTICS OF MAJOR TA/ SHUTDOWNS HANDLED



# STATISTICS OF MAJOR TA HANDLED



Client <div><div></div></div>	COMPRESSOR	TURBINE	GEAR BOX	EXTRUDER	EXTRUDER ASSOCIATED EQPT.	BLOWER	ROTARY FEEDER	AGITATOR	FIN FAN	MISC ROTARY EQU	PUMP	MOTOR	CENTRIFUGAL BLOWER	ID / FD FAN	EXPANSION TURBINE	Grand Total
SAUDI KAYAN	26	1	5	26	37	46	14	51	2	52	140	23	38	5		466
AL BAYRONI	11	6						6			21			15		59
APCC	1															1
AR-RAZI	23	36	1							7	17			5	2	91
GAS	4		1							1	5					11
IBN RUSHD	4	1				4		33		44	59		1	6		152
IBN ZHAR	1		4	3	13						2					23
MAADEN			2								16		2	1		21
SADARA	3		2		2	2					49					58
SAFCO	1	2	1													4
SAHARA			1													1
SAMAC			1	5		2	1	2			11	67	4			93
SATORP	10	3	5			6				7	7					38
S-CHEM	3	9	2	3	4				86	1	20			2		130
SHARQ	4			1							1					6
SIPCHEM	12	8	2	1						8			2	2		35
TASNEE	21	4	22	7	9		21	14		14	48	109		1		270
Grand Total	124	70	49	46	65	60	36	106	88	134	396	199	47	37	2	1459





# ***OEM WISE EXPERIENCE LIST***

- SHIN NIPPON - 26
- MHI- 18
- ELLIOT - 17
- MAN TURBO - 2
- GE -2
- Sundyne-1
- Dresser-1
- NUOVO PIGNONE-1





# ***AFFILIATE WISE STEAM TURBINES HANDLED***

Client	DRESSER	DRESSER RAND	ELLIOTT	GE	MAN	MHI	NUOVO PIGNONE	SNM	SUNDYNE	
SAUDI KAYAN			1							1
AL BAYRONI			1	1		4				6
AR-RAZI						11		25		36
IBN RUSHD								1		1
SAFCO							2			2
SATORP			3							3
S-CHEM			9							9
SIPCHEM	1		3	1	2				1	8
TASNEE		1				3				4
Grand Total	1	1	17	2	2	18	2	26	1	70

***AFFILIATE WISE COMPRESSORS HANDLED***

Client	MHI	DRESSER - RAND	SIEMENS	ELLIOTT	KOBELCO	ATLAS CAPCO	MAN TURBO	Misc. OEM	Cameron	GE	KAWASAKI	MYCOM	NEUMAN & ESSER	NUOVO PIGNONE	SIHI PUMP	SUNDYNE	TOTAL
SAUDI KAYAN								26									26
AL BAYRONI		10		1													11
APCC				1													1
AR-RAZI	18		3			2											23
GAS			3			1											4
IBN RUSHD			2								2						4
IBN ZHAR								1									1
SADARA				1				1					1				3
SAFCO														1			1
SATORP				9	1												10
S-CHEM					2							1					3
SHARQ				1					3								4
SIPCHEM					5	1	3			1					1	1	12
TASNEE	6	1			3		1	9				1					21
Grand Total	24	10	8	13	11	4	4	37	3	1	2	2	1	1	1	1	124



**AFFILIATE WISE PUMPS HANDLED**

Client	PUMP	Grand Total
SAUDI KAYAN	140	140
AL BAYRONI	21	21
AR-RAZI	17	17
GAS	5	5
IBN RUSHD	59	59
IBN ZHAR	2	2
MAADEN	16	16
SADARA	49	49
SAMAC	11	11
SATORP	7	7
S-CHEM	20	20
SHARQ	1	1
TASNEE	48	48
Grand Total	396	396

○ ○ ○ ○

# ***OEM WISE EXPERIENCE LIST***

- KOBELCO – 9 Extruders
- JSW – 29 Extruders
- COPERIAN – 6 Extruders
- FARREL POMINI – 1 Extruder
- KRAUSS MAFFEI– 1 Extruder





# STATISTICS OF EXTRUDERS HANDLED

Client	Plant	Make	Year of Execution	No of Extruders
<b>TASNEE</b>	<b>HDPE</b>	<b>KOBELCO</b>	<b>Mar-22</b>	<b>1</b>
SAUDI KAYAN	LDPE	KRAUSS MAFFEI	Mar-22	1
SIPCHEM	PP	COPERION	Feb-22	1
SAUDI KAYAN	PP	JSW	Feb-22	2
SAMAC	SAMAC	JSW	Jan-22	1
<b>SAUDI KAYAN</b>	<b>HDPE</b>	<b>KOBELCO</b>	<b>Nov-21</b>	<b>1</b>
<b>IBN ZAHR</b>	<b>PP # 3</b>	<b>KOBELCO</b>	<b>Oct-21</b>	<b>1</b>
<b>TASNEE</b>	<b>HDPE</b>	<b>KOBELCO</b>	<b>May-21</b>	<b>1</b>
SAMAC	SAMAC	JSW	Apr-21	1
<b>SHARQ</b>	<b>PE 3 &amp; 4</b>	<b>KOBELCO</b>	<b>Mar-21</b>	<b>1</b>
SAUDI KAYAN	PC	JSW	Feb-21	3
SAMAC	SAMAC	JSW	Jan-21	1
IBN ZAHR	PP	FARREL POMINI	Feb-20	1
SAUDI KAYAN	PP	JSW	Nov-19	1
SAUDI KAYAN	PP	JSW	Nov-19	1
SAMAC	SAMAC	JSW	Jun-19	1
TASNEE	PP Line 1 & 2	COPERION	Mar-19	2
<b>IBN ZHAR</b>	<b>PP</b>	<b>KOBELCO</b>	<b>Dec-18</b>	<b>1</b>
SAMAC	SAMAC	JSW	Nov-18	1
<b>TASNEE</b>	<b>HDPE</b>	<b>KOBELCO</b>	<b>Sep-18</b>	<b>1</b>
SAUDI KAYAN	PP	JSW	Nov-17	1
S-CHEM	S-CHEM	COPERION	Oct-16	2
S-CHEM	S-CHEM	COPERION	Oct-16	1
SAUDI KAYAN	PC	JSW	Apr-16	8
<b>TASNEE</b>	<b>HDPE</b>	<b>KOBELCO</b>	<b>May-15</b>	<b>1</b>
<b>TASNEE</b>	<b>HDPE</b>	<b>KOBELCO</b>	<b>Oct-14</b>	<b>1</b>
SAUDI KAYAN	PC	JSW	Apr-13	8
<b>Total Complted Jobs</b>				<b>46</b>

# AUXILIARY ROTATING EQUIPMENT EXPERIENCES

Client	GEAR BOX	BLOWER	ROTARY FEEDER	AGITATOR	FIN FAN	MISC ROTARY EQU	MOTOR	CENTRIFUGAL BLOWER	ID / FD FAN	Grand Total
SAUDI KAYAN	5	46	14	51	2	52	23	38	5	236
AL BAYRONI				6					15	21
AR-RAZI	1					7			5	15
GAS	1					1				2
IBN RUSHD				33		44		5	6	88
IBN ZHAR	4									4
MAADEN	2							2	1	5
SADARA	2							2		4
SAFCO	1									1
SAHARA	1									1
SAMAC	1		1	2			67	6		77
SATORP	5					7		6		18
S-CHEM	2				86	1			2	91
SIPCHEM	2					8		2	2	14
TASNEE	22		21	14		14	109		1	181
Grand Total	49	46	36	106	88	134	199	61	37	758



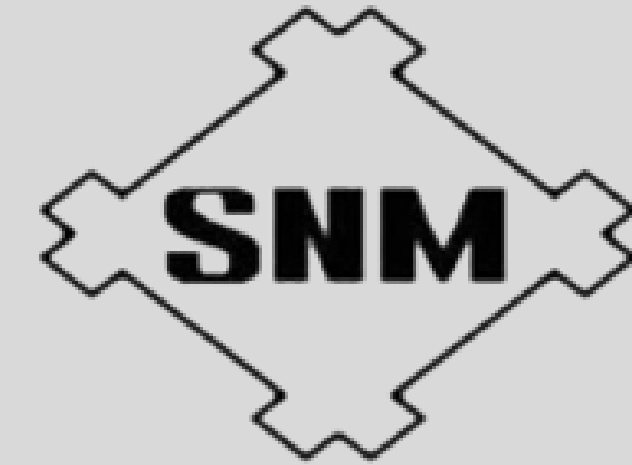


# ***SERVICES OFFERED FOR ROTATING EQUIPMENT***

- ON-SITE ACTIVITIES
- WORKSHOP SERVICES
- SPARES
- SUPERVISORY SERVICES



# OEM TIE-UP-JSW



**SHIN NIPPON MACHINERY CO., LTD.**

*SMH IS A REPRESENTATIVE IN EXECUTING THE SERVICES OF EQUIPMENT AND PARTS FOR STEAM TURBINES AND CENTRIFUGAL PUMPS ALL OVER THE KINGDOM.*

YEAR 2015 WHEN SMH MANUFACTURING & INDUSTRIAL SERVICES TAKE EXCEPTIONAL PRIDE FOR HIGH QUALITY ROTARY PARTS WITH STRATEGIC ALLIANCE TO JAPANESE ORIGINAL EQUIPMENT MANUFACTURER (OEM) SHIN NIPPON MACHINERY IN THE KINGDOM OF SAUDI ARABIA ENRICHING TECHNICAL SUPPORT SERVICES FOR THE CENTRIFUGAL PUMP AND STEAM TURBINE FOR OIL, GAS AND PETROCHEMICAL INDUSTRIES ACROSS THE REGION.



# OEM TIE-UP-JSW



# JSW

THE JAPAN STEEL WORKS, LTD.

*IN 2017 SMH HAD A SERVICE AGREEMENT WITH ONE OF THE LEADING JAPANESE COMPANY JSW- (JAPAN STEEL WORKS) FOR REPAIR AND OVERHAUL OF EXTRUDER AND AUXILIARY EQUIPMENT SERVING CUSTOMERS ALL OVER THE KINGDOM OF SAUDI ARABIA.*



# SPECIAL SERVICES

- SABIC MASTER AGREEMENT (4900002271)
- Work Description : Rotor Refurbishment & repair works
- Contract duration : 05 years (Year 2022 ~ Year 2027)
- We are proud to announce that we have been awarded with Master agreement for Rotor refurbishment works.
- We have a full fledged workshop to handle all rotor repair works like Balancing of rotor, Electrical runout, Journal repair, Machining works, fabrication of new Rotors.



Happy to share good news. With reference to subject RFx and subsequent negotiations, we created MA#4900002271 for 5 years (16-Jan-2022 to 15-Jan-2027). You are requested to review, sign and stamp attached documents (every page).  
Document shall be signed by YES YEM YECH INDUSTRIAL SERVICES CO LTD representative whose signature is approved by Chamber of Commerce.

Agreement No.#	Service Description	Vendor name	Start date	End date
4900002271	Rotor refurbishment (non OEM) Services	YES YEM YECH INDUSTRIAL SERVICES CO LTD	16.01.2022	15.01.2027





# ***SPECIAL SERVICES***

- **Rotor Repair Services** : End to End Repair services for all types of Equipment rotors with In House facilities.
- **Balancing** : SMH has capacity to handle balancing of Rotors up to 20 Tons.
- **Technical Vendor Services** : SMH representing JSW Extruders & SHIN NIPPON Process Pumps & Steam Turbines and provide Supervisory Services.
- **Workshop Service** : Can handle overhauling of Pumps, Turbines, Compressor, Gear Boxes, Planetary Gear Boxes, and etc at our workshop.
- **Bolt Torqueing** : Have full fledged team with Enerpac certified tools to handle any type of torqueing works.
- **Electrical** :Transformer Oil Filtration Services
- **De-Magnetization**: SMH can handle De-Magnetizing Services both at site and in house for Turbo machineries and Rotors.





# APPRECIATION CERTIFICATES





# APPRECIATION CERTIFICATES

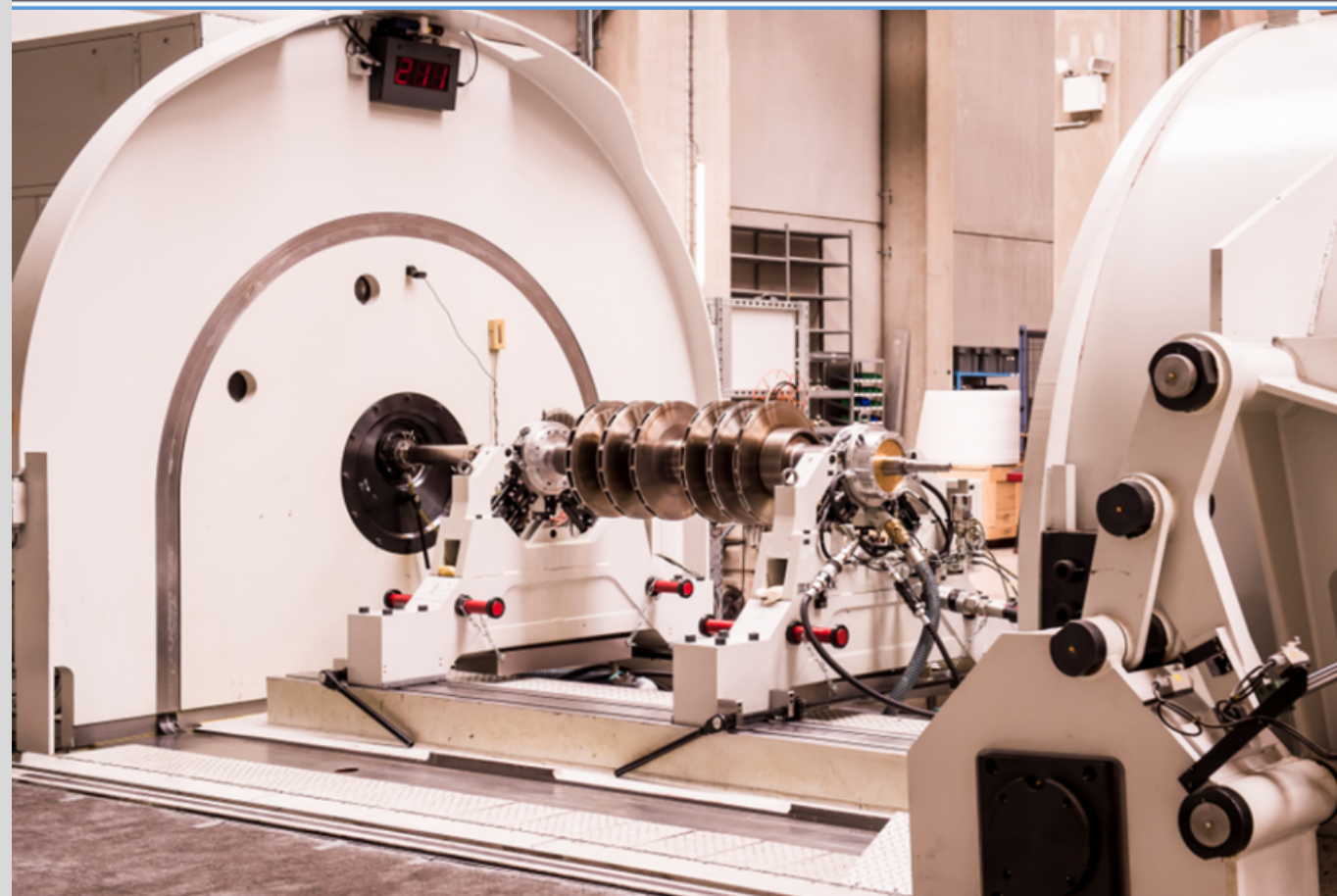
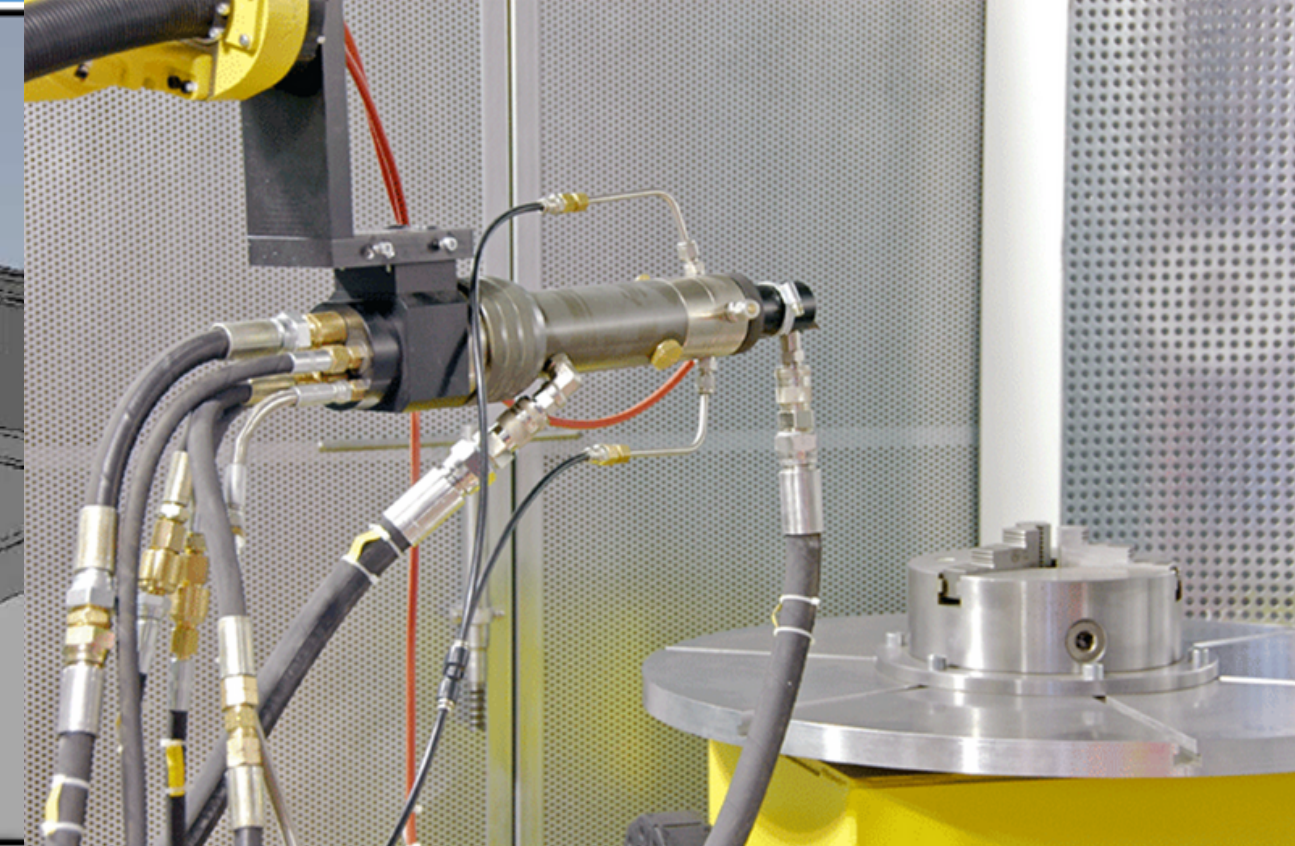
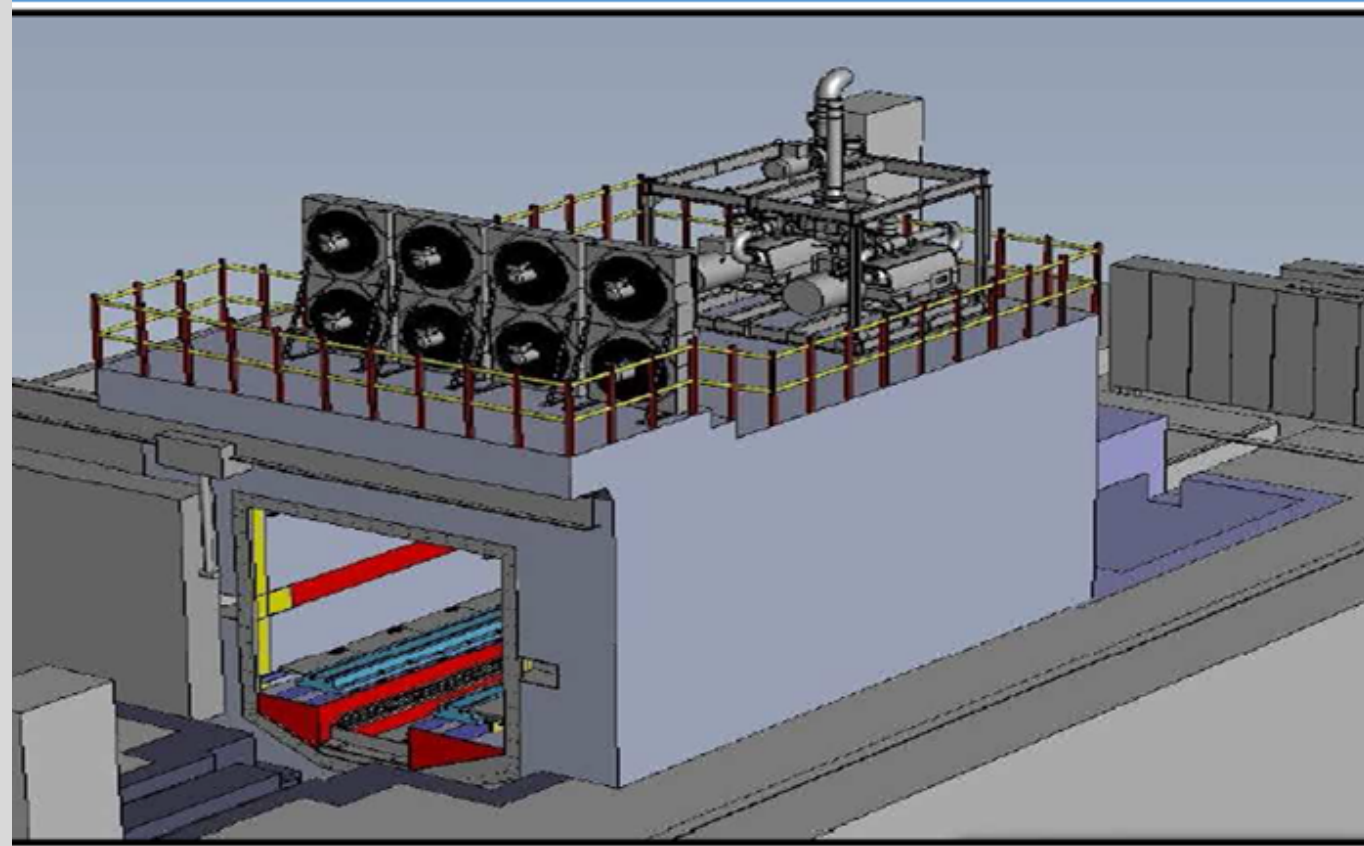




# FUTURE PLAN

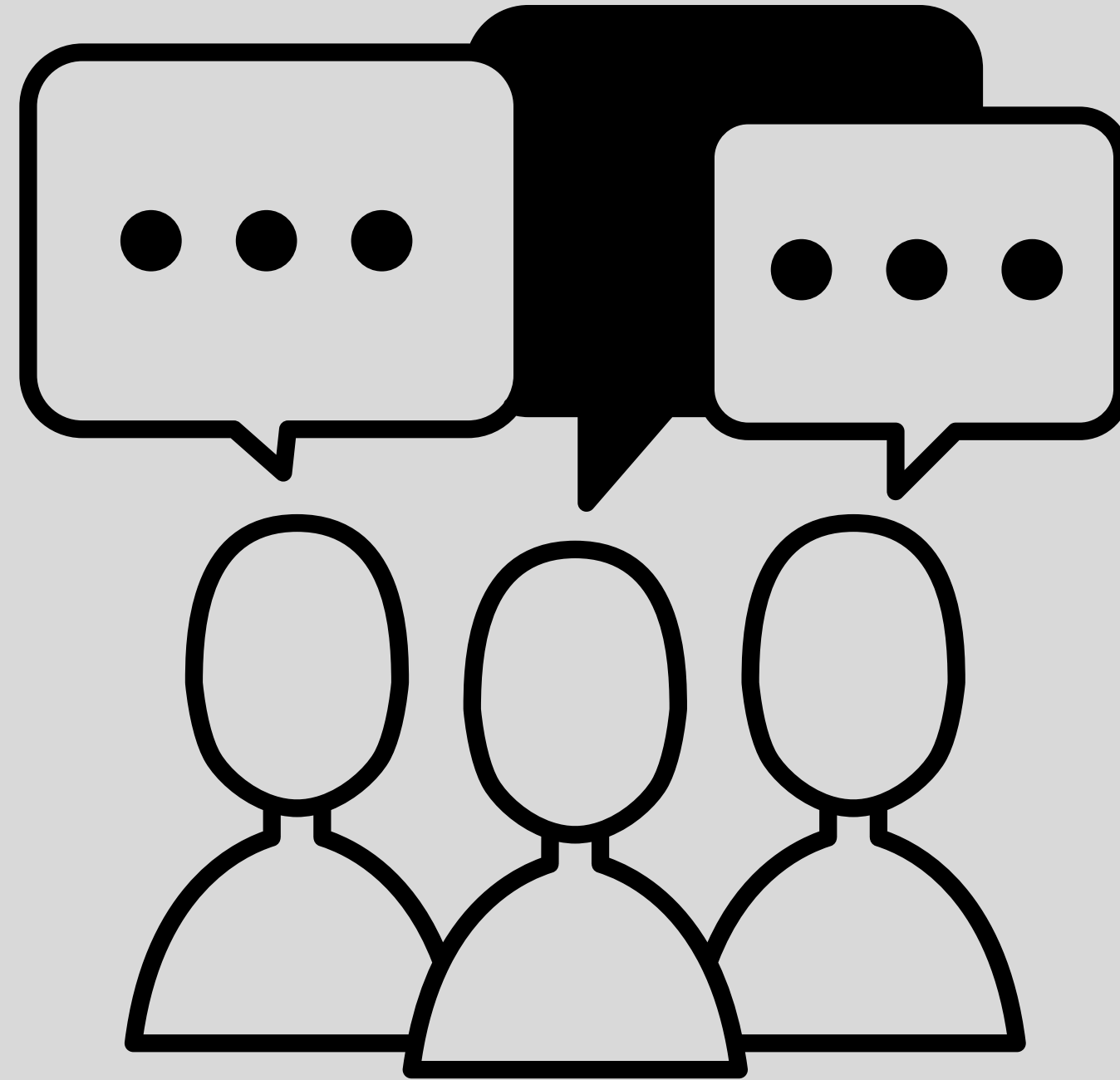
## FOR CONTINUOUS IMPROVEMENT

- **HVOF**
- **SURFACE GRINDER**
- **HIGH SPEED  
BALANCING MACHINE**
- **HIGH SPEED  
BALANCING MACHINE**





# ***DISCUSSION***





# THANK YOU

*We look forward to working  
with you...*

## OFFICE



Third Support Industrial area  
in Al-Jubail.



013 342 0505



<https://smharabia.com/>



[sales@smharabia.com](mailto:sales@smharabia.com)